

Forget the chicken wings and potato chips, this Super Bowl is all about the bling

When the XLII Super Bowl hits the University of Phoenix Stadium in Glendale, Ariz., in February, it's a good bet shopkeepers will be selling silly T-shirts and related corny memorabilia. As for area residents, they'll be cashing in on the event, too. Residents of the Phoenix suburb are looking to rent out their homes to event attendees, reports the *Arizona Republic*. Local homeowners have already

RENTALS

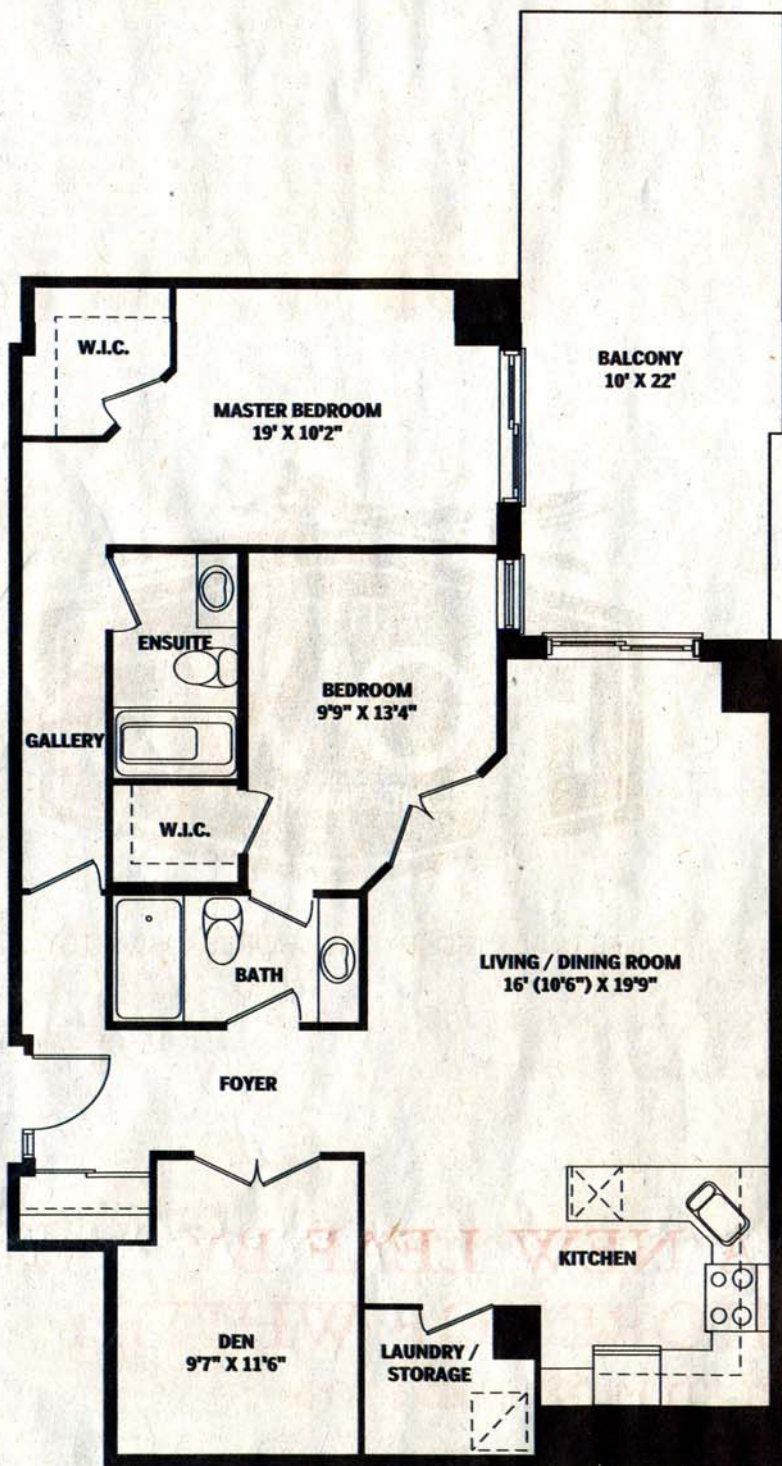
posted 100 rental listings on Craigslist. One Glendale resident and his daughter are hoping to rent out several area homes that week, including their own. The daughter is advertising her place for US\$25,000 so out-of-town visitors can stay in her "custom home" near the stadium, the

Republic says. One penthouse owner in Phoenix is throwing in extras like reservations at fine restaurants and a limo, for the cost of US\$100,000 for the week. *National Post*



CONSTRUCTIVE CRITICISM

Three design experts analyze a layout for this 1,261-square-foot condominium



JEFFREY DOUGLAS
Interior designer



Where to begin. This plan has no clear separation between private and public space. The gallery hall is too long; the bedroom has no privacy, opening off the living/dining room; and the master ensuite is nothing special – it's smaller than the second bathroom! First, I'd eliminate the bedroom door to the living room and square

off the corner, creating a box to the left of the living room window equal to the one on the right. Then I'd carry the wall down to meet an extended foyer wall. The foyer bathroom now has space to its right into which to move the walk-in-closet and access to the bathroom. The old walk-in-closet space can now become an anteroom for the two bedroom doors, clearly defining the apartment's private zone. I would then move the master ensuite to the left

wall, in line with the master bedroom's walk-in closet to break up the long corridor, but with the ensuite in the plan's upper corner. The space from the new anteroom to the far master bedroom wall slightly enlarges the ensuite, allowing for a big shower, vanity and semi-private toilet area in the corner. Whew!
■ Jeffrey Douglas, head of Toronto's Douglas Design Studio, creates homes that tightly integrate architecture and interior design.

HEATHER DUBBELDAM
Architect



Although this plan is generous at 1,261 square feet, there are two major flaws. First, it is located on an inside corner of the building with limited access to natural light and views, and with no other options for the location of rooms that require windows by code. Second, circulation and room access is poorly planned with little

regard for division between the public and private zones. The U-shaped kitchen is tight for such a large unit and the unused space in front of the laundry room could have been better programmed. The gallery is really a corridor with a clever name. The second bedroom door opens directly on to the public space, not ideal for either a guest bedroom or child's room. Consider flipping the ensuite bathroom and gallery so that the corridor divides the bathroom and

second bedroom. Move the laundry/storage room below the ensuite bathroom and give that space over to a larger, more functional kitchen and adjacent dining area. Slide the second bathroom toward the living area and relocate the door to the second bedroom off the corridor for entry from the private zone, thus creating a more functional living area with better wall space.
■ Heather Dubbeldam is principal of Dubbeldam Design Architects in Toronto.

DEE DEE TAYLOR HANNAH
Architect, interior designer



Let's call a spade a spade – the gallery is a back hall to a bedroom, not a place to hang art. Lose the hall and move everything over so you increase the living/dining space. Now the realization hits that this unit is too big and weirdly shaped to have two bedrooms because it is very difficult to give each bedroom a window. The true solution is to

redesign the building, or else give this unit away free of charge. The other option is to call it a dark but large one-bedroom suite extraordinaire. The revisions are as follows: The large bedroom would fill the top rectangle of the plan, complete with a six-piece ensuite and dressing room adorned with mirrors. The middle rectangle would have separate living and dining spaces, with one of the sofas as a pullout, so call it almost a two-bedroom suite. This

middle section is the jewel of your design and your public forum, so give it your all in terms of fabrics and finishes. Panel the walls with cushioned fabric, play with the paint sheen from flat to high-gloss using one colour. The bottom rectangle would be storage, laundry, kitchen and den and you even have room for a darkroom for your new photography career.
■ Dee Dee Taylor Hannah operates Taylor Hannah Architect and is a partner in Montclair Construction.