

CITY
St. Williams (ON)

COUNTRY
Canada

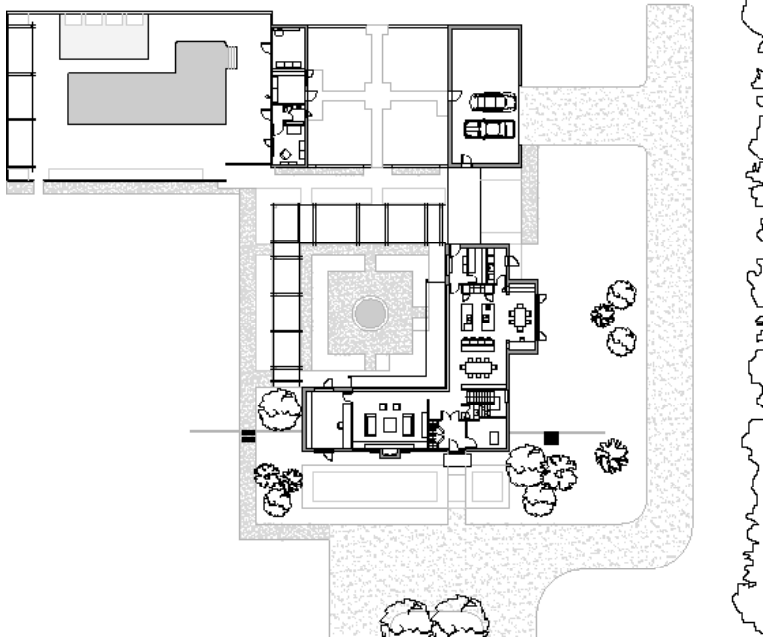
REGION
North America

TYPOLGY
Living

COMPLETION
2005

WEBSITE
dubbeldamarchitects.com

ARCHITECTS
Dubbeldam Design Architects



01



02



03

WOODSIDE HOUSE

Sheltered by a ridge of trees and situated in the corner of a large farm overlooking fields of barley, the house is conceived as a L-shaped volume defining an outdoor courtyard garden. Full-height windows look into the courtyard, creating the perception of an outdoor room that extends the interior space, allowing views across both wings of the house. Opposing clerestory windows provide privacy and excellent natural ventilation. In the manner of restrained Swiss architecture, the elevations are a repetition of elements and modular building materials intended to keep construction time and cost low.

01 Floor plan 02 View into interior from garden 03 Rear façade 04 View to garden from interior 05 Kitchen and hallway

Photos: Heather Dubbeldam



04



05



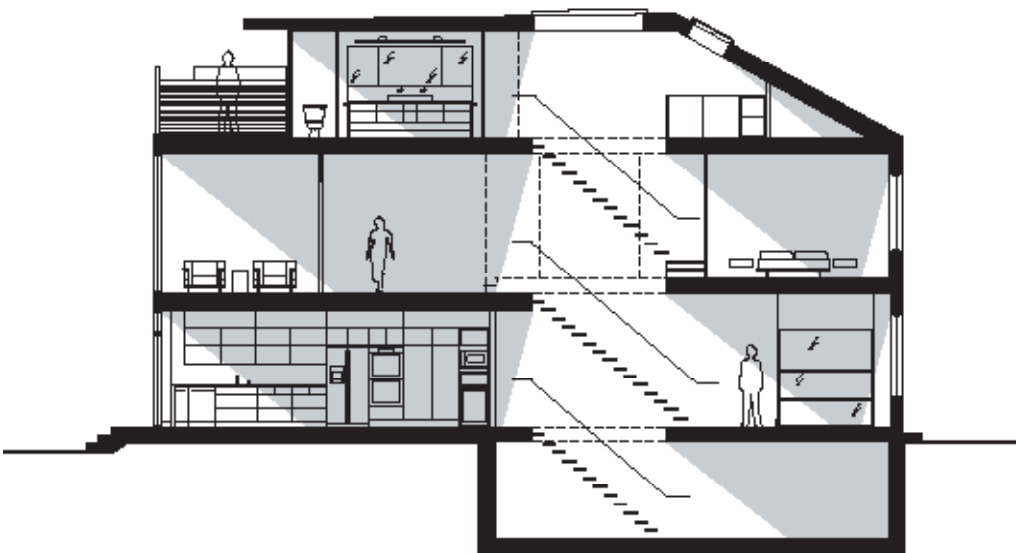
01



02



03



CABBAGETOWN RESIDENCE

Located in one of Toronto's heritage neighbourhoods, the new addition to the rear of the house is boldly modern, while the front façade is preserved. The renovation incorporates a vertical circulation spine with an open plan, allowing rooms to feel larger and more connected and improving flow in the narrow residence. A long skylight above an open riser stair draws light into the lower floors, charging them with natural light. The fully glazed rear façade has a southern orientation, maximizing solar gain in cold winter months while exploiting deciduous trees for shade and privacy during the summer.

01 Glazed rear façade 02 Bathroom 03 View into living room from vertical circulation spine 04 Longitudinal section

Photos: Shai Gil, Insite Photography